

# Time 2 Shine

1721 W. 51<sup>st</sup> St  
Sioux Falls, SD 57105  
www.sfearlyintervention.org  
Issue 1  
September, 2009

## Time 2 Shine Therapy celebrates first year of service!



### Successful collaboration with area school districts

“Time 2 Shine Therapy is responsible for our student being integrated back into our public school. We had a student with autism move into our district. We were unable to effectively meet his needs within our setting. Time 2 Shine was able to enhance communication, attending and coping skills, as well as train our staff to follow through with their strategies. Julie and Paul kept in consistent contact with us to let us know how he was doing and were very open to our staff observing how they worked with this student. We are very fortunate to have this service available and we will not hesitate to call on Time 2 Shine Therapy again if needed. ”

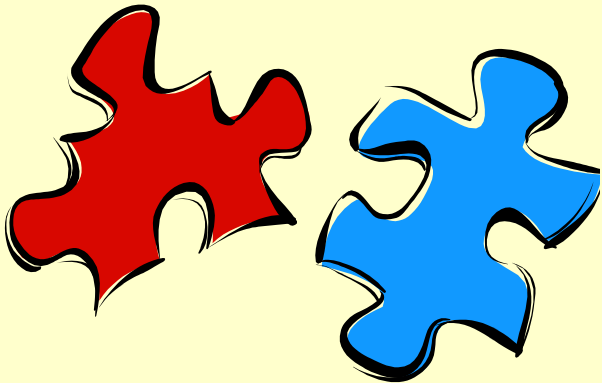
Lori Green, Special Services Director—  
Baltic/Chester/Tri-Valley Schools

### Families celebrate success!

“We got our son started with Paul and Julie at the end of last July and I know what you mean about progress! In a week, he began to make strides and do things he had never done before. After a couple of months, we saw more progress with Paul and Julie than we saw in a full year. We are just thankful that we have services in place for him now and we are seeing him progress and grow. ” Shawn & Ginger

### Non-profit Status granted

Time 2 Shine Therapy was granted non-profit status with the IRS in March 2009. This provides us with the ability to accept grant monies, donations, and have fundraisers to offset tuition fees for families that qualify on our sliding fee scale. This scale uses the U.S. Department of Health and Human Services Poverty Guidelines .



## Board Members

**Paul Graumann**, Co-Founder MS CCC SLP  
Time 2 Shine Therapy

**Julie Klusmann**, Co-Founder OTR/L  
Time 2 Shine Therapy

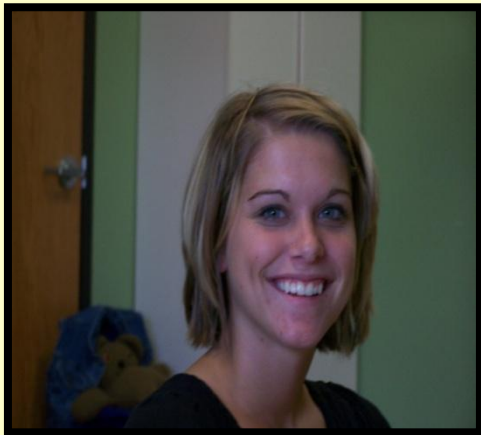
**Nordell Griebel**, Treasurer CPA

**Sandy Young**, Secretary Web design

**Karla Brown**, Parent

**Tom Babb**, Clinical pharmacist

**Lori Thompson**, Accounts Receivable  
Specialist



### Time 2 Shine thanks Kayla Petersen !

Kayla is an Occupational Therapy Student from the University of North Dakota. She recently completed a 10 week pediatric fieldwork with Time 2 Shine Therapy. Kayla will complete her Masters in Occupational Therapy in May 2011.

**If you are interested in  
our services please contact  
Paul 351-7976 or Julie  
359-8723**

## Highlights

### Grants/Donations

**Creative Child Magazine**

**Toy donations**

**Edmundson Family**

**monetary gift**

**Arne & Peggy Bortnem**

**monetary gift**

**Gloria Paulin**

**monetary gift**

**Metabank Community Giving Fund \$100.00**

**Sioux Falls Area Community Fund \$900.00**

Allocated for therapy equipment and games

**Midcontinent Communications \$1,500.00**

Allocated towards tuition assistance for families who qualify

**Sioux Valley Energy Operation Round Up \$2,000.00**

Allocated towards tuition assistance for families who qualify

Many families have taken advantage of our tuition assistance program!

*Donations for  
Time 2 Shine Therapy*

Can be sent to:

Time 2 Shine Therapy

1721 W. 51<sup>st</sup> St

Sioux Falls, SD 57105

[www.sfearlyintervention.org](http://www.sfearlyintervention.org)

359-8723 Julie; 351-7976 Paul

Look for Time 2 Shine at

*Walk Now for Autism*

**Saturday October 3, 2009**